



# DISCOVERY

EVERYTHING FOR INDUSTRY & SERVICES



## LOW VOLTAGE, MEDIUM VOLTAGE & HIGH VOLTAGE POST AND LINE INSULATOR ( EPOXY RESIN, COMPOSITE, SILICONE, PORCELAIN & GLASS INSULATORS )

These insulators are used for low voltage overhead distribution lines to fix the conductors to the post bodies. This group of insulators includes of low voltage insulators standardized in accordance with TSE, DIN and ANSI specifications. These insulators are divided into mainly three in accordance with types:

- \*Pin type insulators
- \*Line post insulators
- \*String Insulators
- \*Long-Rod Insulators
- \*Railway insulators
- \*Low voltage insulators

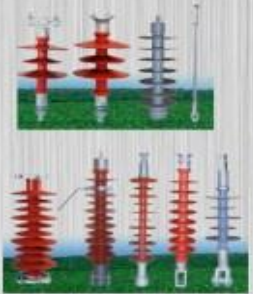


- PIN type insulators DIN norms.  
 - Shackle and spool insulators in accordance with DIN and ANSI norms.  
 - String insulators in accordance with ANSI norms.  
 These insulators are made of hard porcelain KER 110-1  
 Other types of insulators which are not covered by this catalogue, can also be produced upon customer's request.



### SILICONE & POLYMER COMPOSITE INSULATORS

These types composite insulators used in medium voltage distribution power lines. These insulators are preferred because of their advantages, areas close to the sea and industrial pollution in regions of high hydrophobic properties to the high insulation to provide better, be impenetrable type, easy assembly, according to the porcelain insulator and glass insulator to the lighter. Kaleseramik is producing composite insulators with pure LSR ( liquid silicon rubber) silicone. All design and type test of Kaleseramik composite insulator products are testing international accredited laboratories according to IEC61109 AND IEC62217 standarts. Not included in our web site, with different service voltage levels and higher creepage distance insulators can be also manufactured customer's requirements.



### EPOXY INSULATORS

**Tests**  
 The following tests, according to IEC 60660 - 1990 are performed:

- Routine tests**
- Visual inspection
  - Testing of conductive connection of fixing inserts for post insulators type B (IEC 60660 1999)
  - Power-frequency withstand voltage (dry)
  - Partial discharge measurement

- Sample tests**
- Testing of minimum failing load for bending

- Additional tests**
- Lightning impulse withstand voltage test (on request)
  - Testing of minimum failing loads (nominal loads) for bending

#### Application

Epoxy cast resin indoor post insulators can be used for all indoor applications. For tropical conditions same types (with special fixing parts) are available. They are suitable for temperatures from -25°C up to +90 °C

#### Construction

Epoxy cast resin indoor post insulators are cylindrical solid insulators, with proper creepage and number of ripples. The main dimensions are in accordance with IEC 60273 - 1990. Auxiliary inserts are connected with main insert electrically.



### TOUGHENED GLASS INSULATORS

We can supply Medium Voltage & High Voltage toughened glass insulators from east European countries manufacturer by way of our sales offices in east European countries.

